

The [Humanitarian Data Exchange \(HDX\)](#) is OCHA's open platform for sharing humanitarian data. The goal of HDX is to make humanitarian data easy to find and use for analysis. Launched in July 2014, HDX has been accessed by users in over 200 countries and territories and hosts over 4,000 datasets from 250 partner organizations.

HDX is creating a [Data Lab in Dakar, Senegal](#) to support data efforts in West Africa. The Lab will serve as an in-person service to the HDX platform and create a space for humanitarian partners, government officials, technologists, universities, and international stakeholders to collaborate on all things data.

Data services will include data extraction, cleaning, storage, analysis, training and visualization. The Lab will also provide the opportunity to find new ways of working together on humanitarian data. It will explore issues of health information management, data security and mobile integration in the West African context.

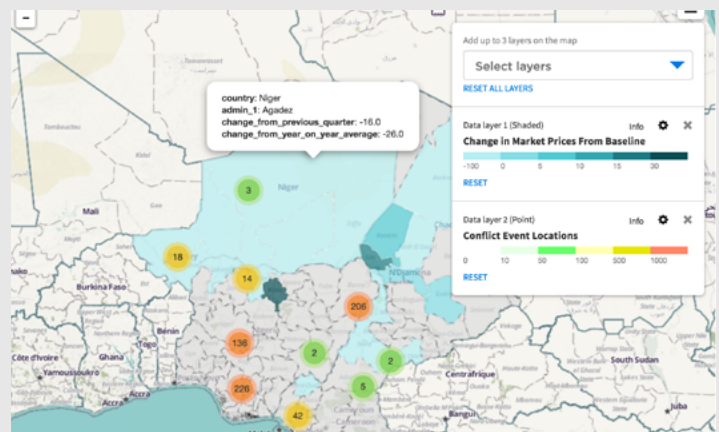
The Lab will support data collection, work with partners on visualisations for improved analytics, and support innovations around the use of data in the humanitarian community. It will seek to host new research projects that can support humanitarian decision-making.

The Data Lab team will work closely with staff from the OCHA regional office, based in Dakar. The Lab Manager oversees our community building, partner relationships, data services, and user experience research. The Data Manager works with partner organizations to advise them on the use of data extraction processes for their systems, while the Data Scientist identifies opportunities in the use of data for partner organisations.

HDX played an important role as an open data repository for the response to the [West Africa Ebola Outbreak](#). The platform provided a neutral place for responders, researchers, and media to find key figures and in-depth data about the crisis. The HDX team also provided direct field support for [data management activities](#) in Guinea during the summer of 2015. More recently, we created a map explorer for data about the [Lake Chad Basin](#).

The [Paul G Allen Family Foundation](#) is supporting our work to establish the Dakar Data Lab. The grant will also be applied to improving the use of the [Humanitarian Exchange Language \(HXL\)](#) and its integration with HDX.

If you're interested in collaborating with us, please contact us at hdx@un.org.



[Lake Chad Basin Crisis \(Map Explorer\)](#)